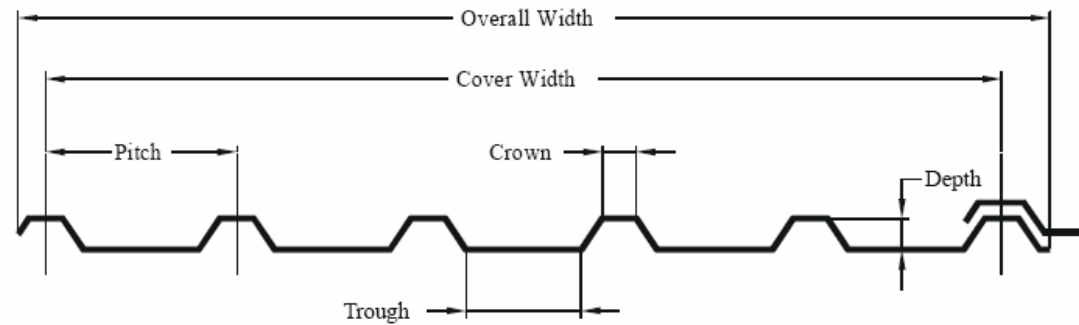


Profile Identification

The profiles displayed in the Weatherform guides are primarily those to match metal and fibre cement profiles. These profiles are presented in alphabetical order under the main sheet manufacturers name. The key definitions used to dimension profiles are shown in Fig.1

Fig.1



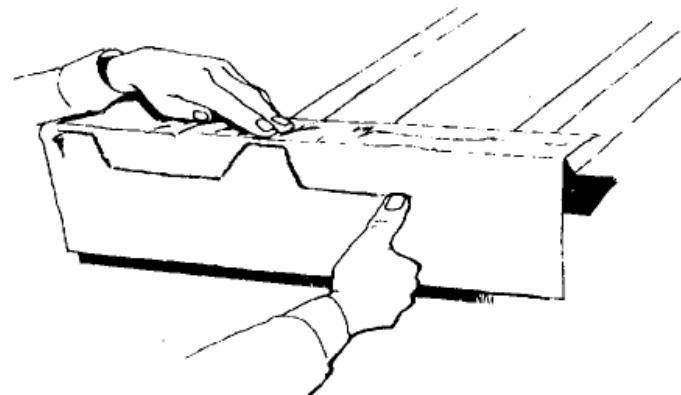
The Profile Identification Section of the guides is designed to enable profiles to be easily recognised based on the following data :

- Pitch
- Depth
- Crown and Trough Dimensions
- Cover and Overall Widths

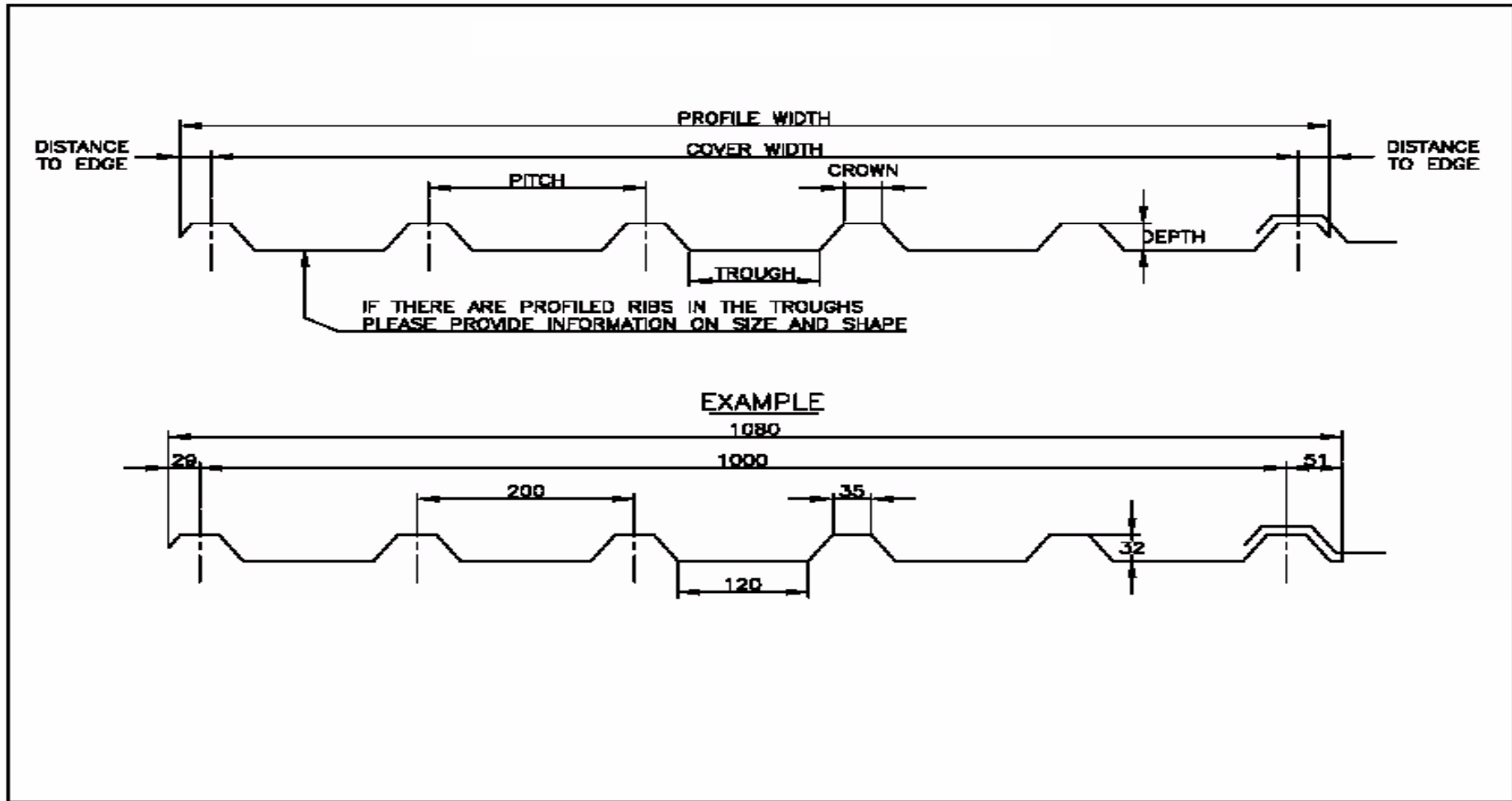
For a more positive identification of any particular profile a rubbing should be taken of one full Pitch, plus a measurement of the Overall and Cover Widths. These details should be supplied to Weatherform Technical Services Department for identification purposes.

To take a rubbing, firmly hold a piece of paper against the corrugated edge of the external sheet and by rubbing with a soft crayon or dirty thumb highlight the shape of the profile. This technique is similar to brass rubbing and is illustrated in Fig.2.

Fig.2

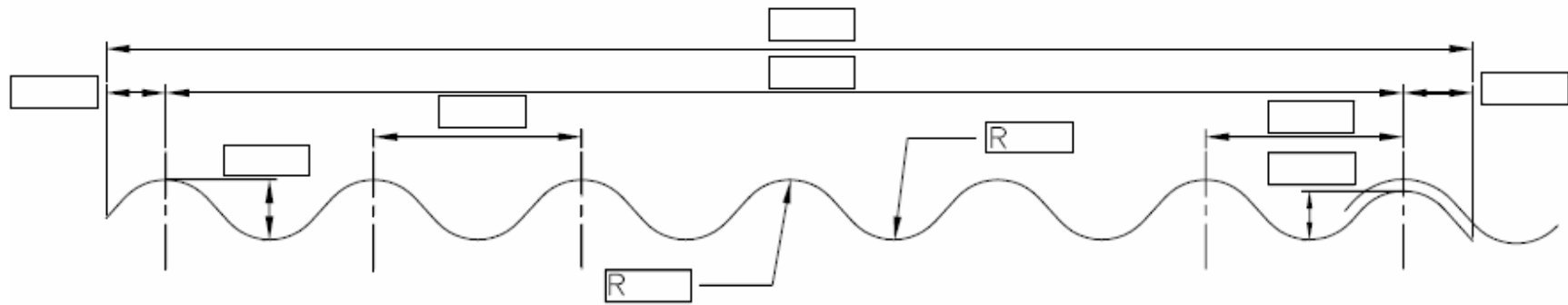
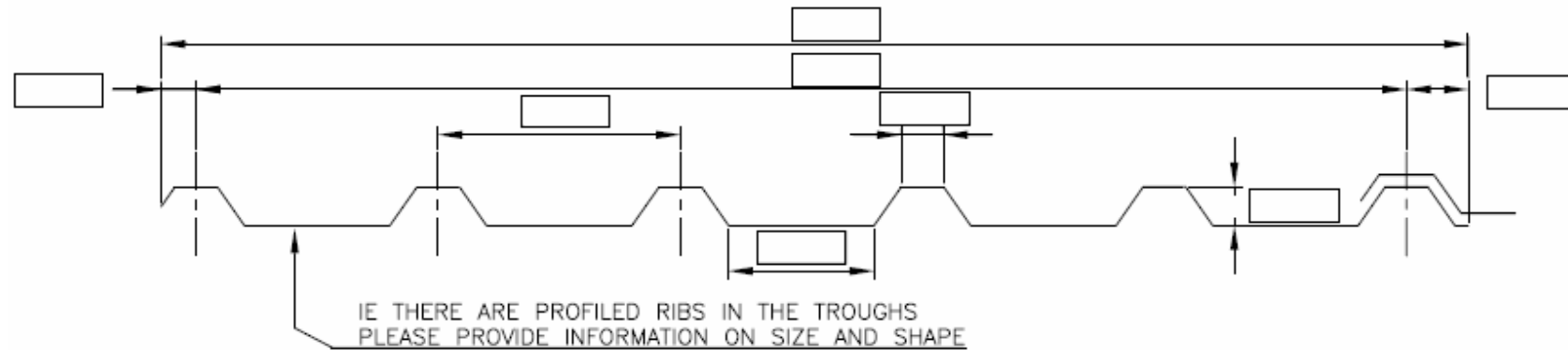


Weatherform Profile identification guide



Technical assistance is freely available from Weatherform Ltd 01225 812757

**ROOF SOAKER PROFILE IDENTIFICATION SHEET. Complete all boxes accurately in MM and fax to:
01225 812758**



OTHER COMMENTS.....

Customer :
Contact:
Telephone:
Fax:
e-mail:

- Profile suggestions are made in good faith based upon information provided. Final acceptance of any suggested profile must always remain the responsibility of the customer. All information or details are intended as a guide only. No responsibility whatsoever will be accepted for any mis-identified or unsuitable profiles following acceptance of a suggested profile. Soaker sheets are made to order and are therefore non returnable.